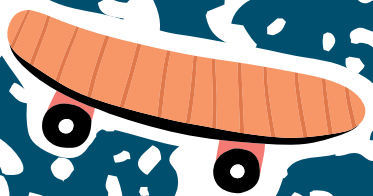




**CENTRAL PRECOCIOUS PUBERTY (CPP):
RECOGNIZING AND
TREATING CPP**



*YOU CAN'T CONTROL
Everything they Do
But you can help control CPP*



abbvie

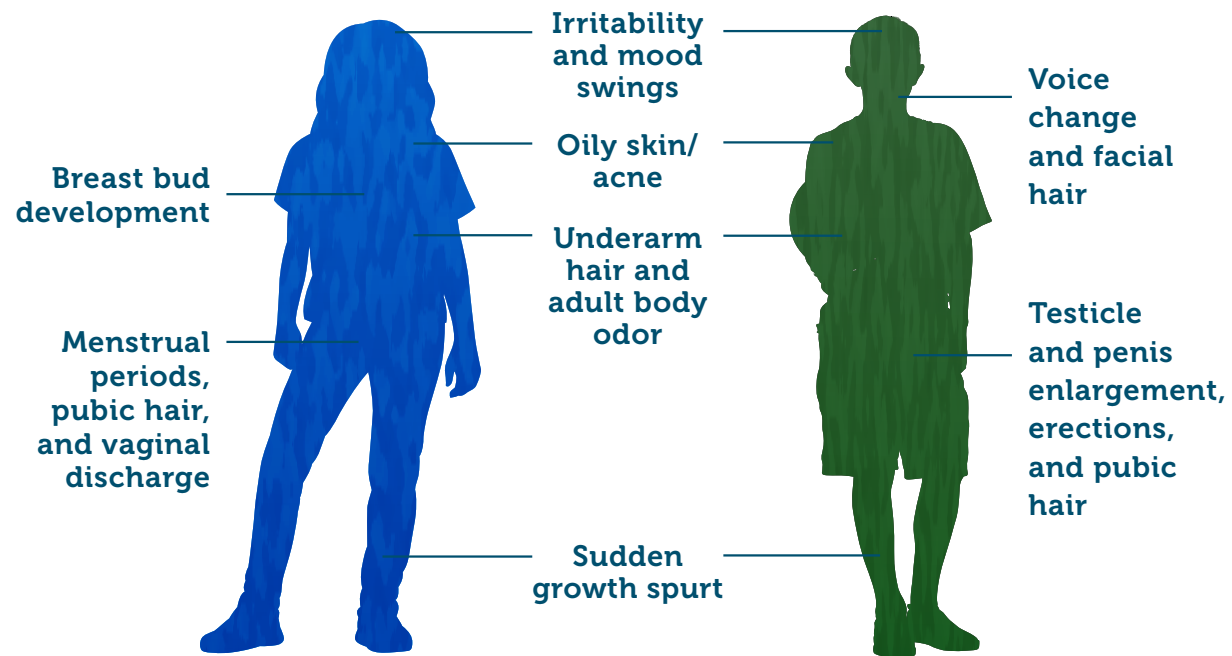
CPP IS THE MOST COMMON FORM OF EARLY PUBERTY IN CHILDREN

CPP is the process of puberty happening too early in children. For girls, that's before the age of 8, and for boys, before the age of 9. CPP occurs when the brain releases certain hormones too early. **These hormones cause the changes seen in puberty.**

Causes of CPP

The exact cause of CPP is usually unknown. For the majority of children, there is no underlying medical condition or identifiable reason for CPP, and it is not necessarily passed on from parents to children. Your child's doctor can perform tests that can help identify a possible cause of CPP.

What are the signs and symptoms of CPP?



If you notice any of these signs or symptoms of early puberty in your child, don't wait to talk with their doctor.

CPP CAN HAVE CONSEQUENCES THAT LAST BEYOND CHILDHOOD IF NOT DIAGNOSED AND TREATED IN TIME



CPP can result in shorter adult height

- Children with CPP may go through an early growth spurt and be taller than their peers at first because their bones mature quicker than normal
- Once the growth plates close, children stop growing, which may lead to shorter adult height



CPP can even affect emotional well-being

Children with CPP may face a series of struggles because they look older than they are. Everyday situations and interactions with their peers can become big challenges for them.



It is important to diagnose CPP early. Diagnosis involves consulting a doctor and conducting several tests, including:

- Thorough physical examination
- X-ray of hand and wrist (helps determine bone age)
- Blood test
- Gonadotropin-releasing hormone (GnRH) stimulation test
- Pelvic or adrenal ultrasound
- MRI or CT scan

The sooner your child starts treatment, the sooner early puberty may slow down.

Learn about the #1* prescribed treatment for CPP on pages 4 and 5.

*Data sourced as of September 2025.

YOU CAN'T CONTROL
Everything they Do
But you can help control CPP

LUPRON DEPOT-PED is the #1*
prescribed treatment for CPP

*Data sourced as of September 2025.



Learn more about CPP
and LUPRON DEPOT-PED

Scan the QR code or visit
www.lupronped.com

LUPRON DEPOT-PED HAS BEEN
TRUSTED BY PARENTS AND DOCTORS FOR OVER

30
YEARS

USE FOR LUPRON DEPOT-PED® (leuprolide acetate for depot suspension)

LUPRON DEPOT-PED 7.5 mg, 11.25 mg, and 15 mg for 1-month, 11.25 mg and 30 mg for 3-month, and 45 mg for 6-month administration are prescribed for the treatment of children with central precocious puberty (CPP).

It is not known if LUPRON DEPOT-PED is safe and effective in children less than 1 year old.

IMPORTANT SAFETY INFORMATION FOR LUPRON DEPOT-PED

What is the most important information I should know about LUPRON DEPOT-PED?

- **During the first 2 to 4 weeks of treatment, LUPRON DEPOT-PED can cause an increase in some hormones.** During this time, you may notice more signs of puberty in your child, including vaginal bleeding. **Call your child's doctor if these signs continue after the second month of treatment with LUPRON DEPOT-PED.**

Please see Important Safety Information throughout.

Please see accompanying [Consumer Brief Summary](https://www.rxabbvie.com/pdf/lupronpediatric.pdf) or visit <https://www.rxabbvie.com/pdf/lupronpediatric.pdf> for full Prescribing Information.

LUPRON DEPOT-PED IS THE #1* PRESCRIBED TREATMENT FOR CPP



The goal of treatment is to slow or stop early puberty. LUPRON DEPOT-PED helps control CPP by stopping the release of hormones that cause early puberty.

LUPRON DEPOT-PED is a gonadotropin-releasing hormone (GnRH) agonist. GnRH agonists are the most common treatment for CPP. They work by helping the pituitary gland ignore signals from the brain. **This, in turn, stops the release of sex hormones that cause puberty.**

LUPRON DEPOT-PED treats CPP

LUPRON DEPOT-PED provides control, **pausing early puberty within 4 weeks.**



96.4% of children taking 1-month LUPRON DEPOT-PED achieved suppression of a reproductive hormone.

Suppression means either pausing early puberty with no changes or reversing the signs of early puberty.

Your child's doctor will decide the right time for your child to stop treatment so puberty can resume.

Talk to your child's doctor about the #1* prescribed treatment for CPP.

*Data sourced as of September 2025.



Please see Important Safety Information throughout.

Please see accompanying [Consumer Brief Summary](https://www.rxabbvie.com/pdf/lupronpediatric.pdf) or visit <https://www.rxabbvie.com/pdf/lupronpediatric.pdf> for full Prescribing Information.

IMPORTANT SAFETY INFORMATION FOR LUPRON DEPOT-PED (cont'd)

What is the most important information I should know about LUPRON DEPOT-PED? (cont'd)

• Some people taking gonadotropin-releasing hormone (GnRH) agonists like LUPRON DEPOT-PED have had new or worsened mental (psychiatric) problems. Mental (psychiatric) problems may include emotional symptoms such as:

- Crying
- Irritability
- Restlessness (impatience)
- Anger
- Acting aggressive

Call your child's doctor right away if your child has any new or worsening mental symptoms or problems while taking LUPRON DEPOT-PED.

• Some people taking GnRH agonists like LUPRON DEPOT-PED have had seizures. The risk of seizures may be higher in people who:

- Have a history of seizures
- Have a history of epilepsy
- Have a history of brain or brain vessel (cerebrovascular) problems or tumors
- Are taking a medicine that has been connected to seizures, such as bupropion or selective serotonin reuptake inhibitors (SSRIs)

Seizures have also happened in people who have not had any of these problems. Call your child's doctor right away if your child has a seizure while taking LUPRON DEPOT-PED.

• Severe cutaneous (skin) adverse reactions may happen during treatment with GnRH agonists like LUPRON DEPOT-PED. Stop LUPRON DEPOT-PED and call your child's doctor right away if your child has any of the following signs or symptoms during treatment with LUPRON DEPOT-PED:

- Skin rash or acne
- Dry skin
- Itching
- Blisters on your skin
- Redness or swelling of your face, hands, or soles of your feet
- Blisters or sores in your mouth
- Peeling of your skin
- Fever
- Muscle or joint aches
- Swollen glands

• Increased pressure in the fluid around the brain can happen in children taking gonadotropin-releasing hormone (GnRH) agonist medicines, including LUPRON DEPOT-PED. Call your child's doctor right away if your child has any of the following symptoms during treatment with LUPRON DEPOT-PED:

- Headache
- Eye problems, including blurred vision, double vision, and decreased eyesight
- Eye pain
- Ringing in the ears
- Dizziness
- Nausea

LUPRON DEPOT-PED should not be taken if your child is:

- Allergic to GnRH, GnRH agonist medicines, or any ingredients in LUPRON DEPOT-PED. See the end of the Medication Guide for a complete list of ingredients in LUPRON DEPOT-PED.
- Pregnant or becomes pregnant. LUPRON DEPOT-PED can cause birth defects or loss of the baby. If your child becomes pregnant, call your child's doctor.

Before your child receives LUPRON DEPOT-PED, tell their doctor about all of your child's medical conditions, including if they:

- Have a history of mental (psychiatric) problems
- Have a history of seizures
- Have a history of epilepsy
- Have a history of brain or brain vessel (cerebrovascular) problems or tumors
- Are taking a medicine that has been connected to seizures, such as bupropion or selective serotonin reuptake inhibitors (SSRIs)
- Are breastfeeding or plan to breastfeed. It is not known if LUPRON DEPOT-PED passes into the breast milk

Tell your child's doctor about all the medicines your child takes, including prescription and over-the-counter medicines, vitamins, and herbal supplements.

LUPRON DEPOT-PED[®]
(leuprolide acetate for depot suspension)

IMPORTANT SAFETY INFORMATION FOR LUPRON DEPOT-PED (cont'd)

What is the most important information I should know about LUPRON DEPOT-PED? (cont'd)

How will your child receive LUPRON DEPOT-PED?

- Your child's doctor should do tests to make sure your child has CPP before treating them with LUPRON DEPOT-PED.
- LUPRON DEPOT-PED is given as a single-dose injection into your child's muscle each month, every 3 months, or every 6 months by a doctor or trained nurse. Your child's doctor will decide how often your child will receive the injection.
- Keep all scheduled visits to the doctor. If a scheduled dose is missed, your child may start having signs of puberty again. The doctor will do regular exams and blood tests to check for signs of puberty.

What are the possible side effects of LUPRON DEPOT-PED?

LUPRON DEPOT-PED may cause serious side effects. See "What is the most important information I should know about LUPRON DEPOT-PED?"

• The most common side effects of LUPRON DEPOT-PED received 1 time each month include:

- Injection site reactions such as pain, swelling, and abscess
- Weight gain
- Pain throughout body
- Headache
- Acne or red, itchy rash and white scales (seborrhea)
- Serious skin rash (erythema multiforme)
- Mood changes
- Swelling of vagina (vaginitis), vaginal bleeding, and vaginal discharge

• The most common side effects of LUPRON DEPOT-PED received every 3 months include:

- Injection site reactions such as pain and swelling
- Weight gain
- Headache
- Mood changes

• The most common side effects of LUPRON DEPOT-PED received every 6 months include:

- Injection site reactions such as pain and swelling
- Headache
- Mood changes
- Upper stomach pain
- Diarrhea
- Bleeding
- Nausea and vomiting
- Fever
- Itching
- Pain in extremities
- Rash
- Back pain
- Ligament sprain
- Weight gain
- Fracture
- Breast tenderness
- Difficulty sleeping
- Chest pain
- Excessive sweating

These are not all the possible side effects of LUPRON DEPOT-PED. **Call your child's doctor for medical advice about side effects.**

This is the most important information to know about LUPRON DEPOT-PED. For more information, talk to your child's doctor or healthcare provider.

You are encouraged to report negative side effects of prescription drugs to the FDA. Visit www.fda.gov/medwatch or call 1-800-FDA-1088.

If you are having difficulty paying for your child's medicine, AbbVie may be able to help. Visit AbbVie.com/PatientAccessSupport to learn more.

Please see Important Safety Information throughout.

Please see accompanying [Consumer Brief Summary](#) or visit <https://www.rxabbvie.com/pdf/lupronpediatric.pdf> for full Prescribing Information.

abbvie

© 2025 AbbVie. All rights reserved.
LUPRON DEPOT-PED® and its design are registered trademarks of AbbVie Inc.
US-LUPR-250215 November 2025

LUPRON DEPOT-PED[®]
(leuprolide acetate for depot suspension)